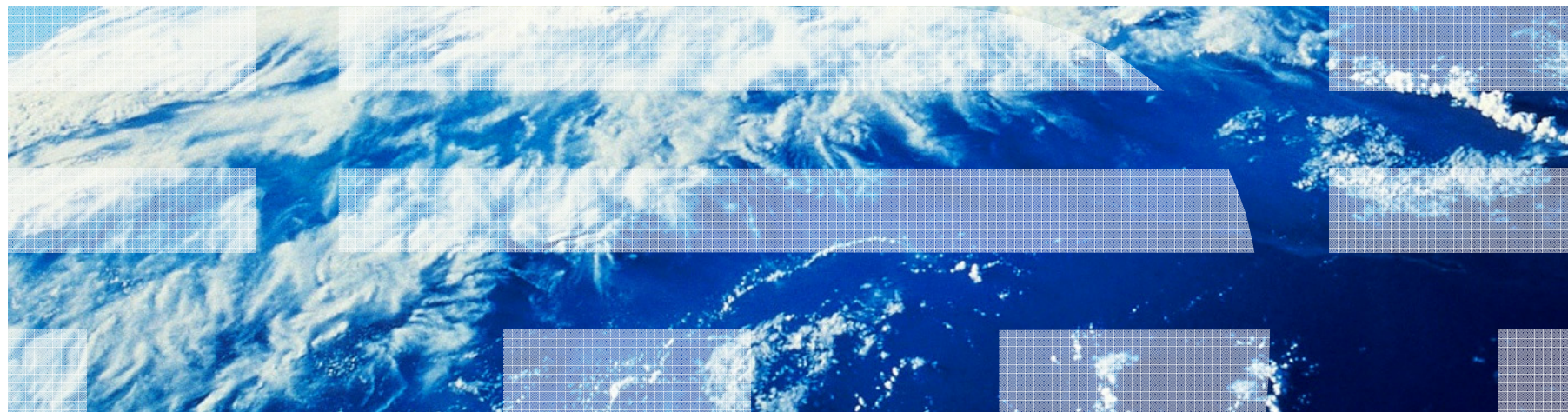
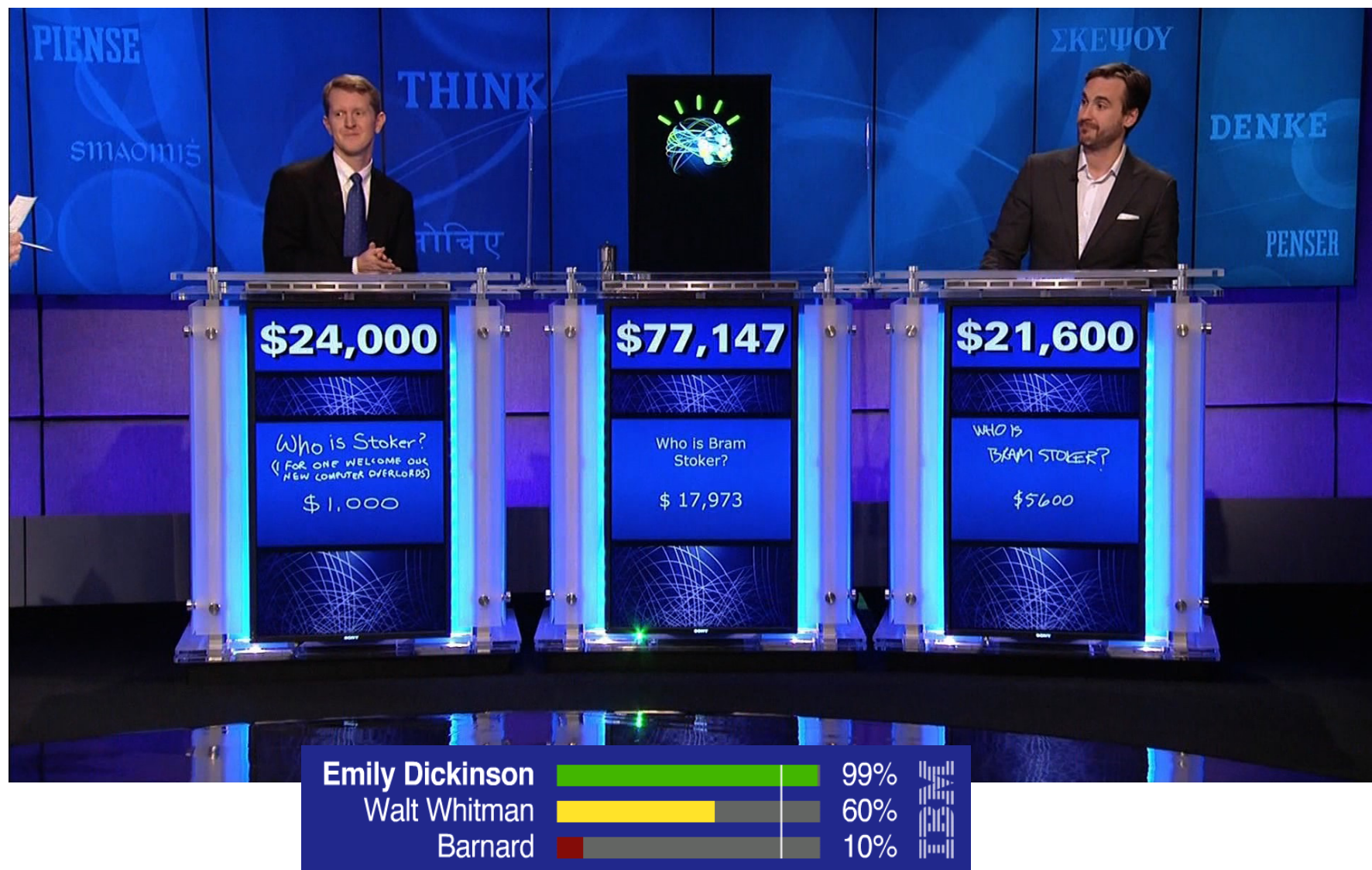


The Future Watson



Precision, Accurate Confidence and Speed – What's Next?



The Future Watson

Extend Watson technology

- Moves beyond “question-in & answer-out” to always “learning” evidence-based decision support

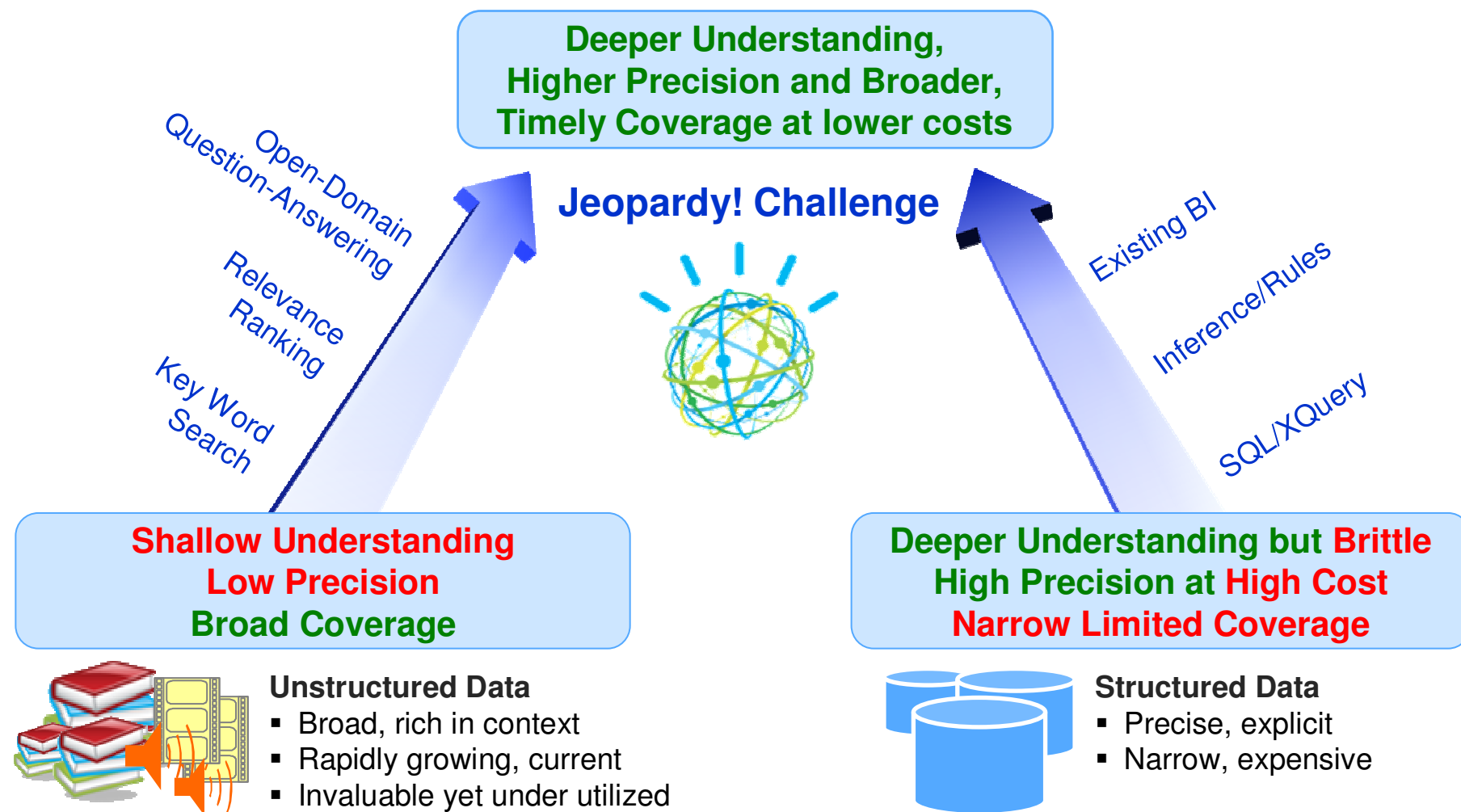
Lead in new domains

- Addresses the enterprise need to convert growing volumes of information into actionable knowledge
- Demonstrates business value in critical problem spaces, starting with Healthcare

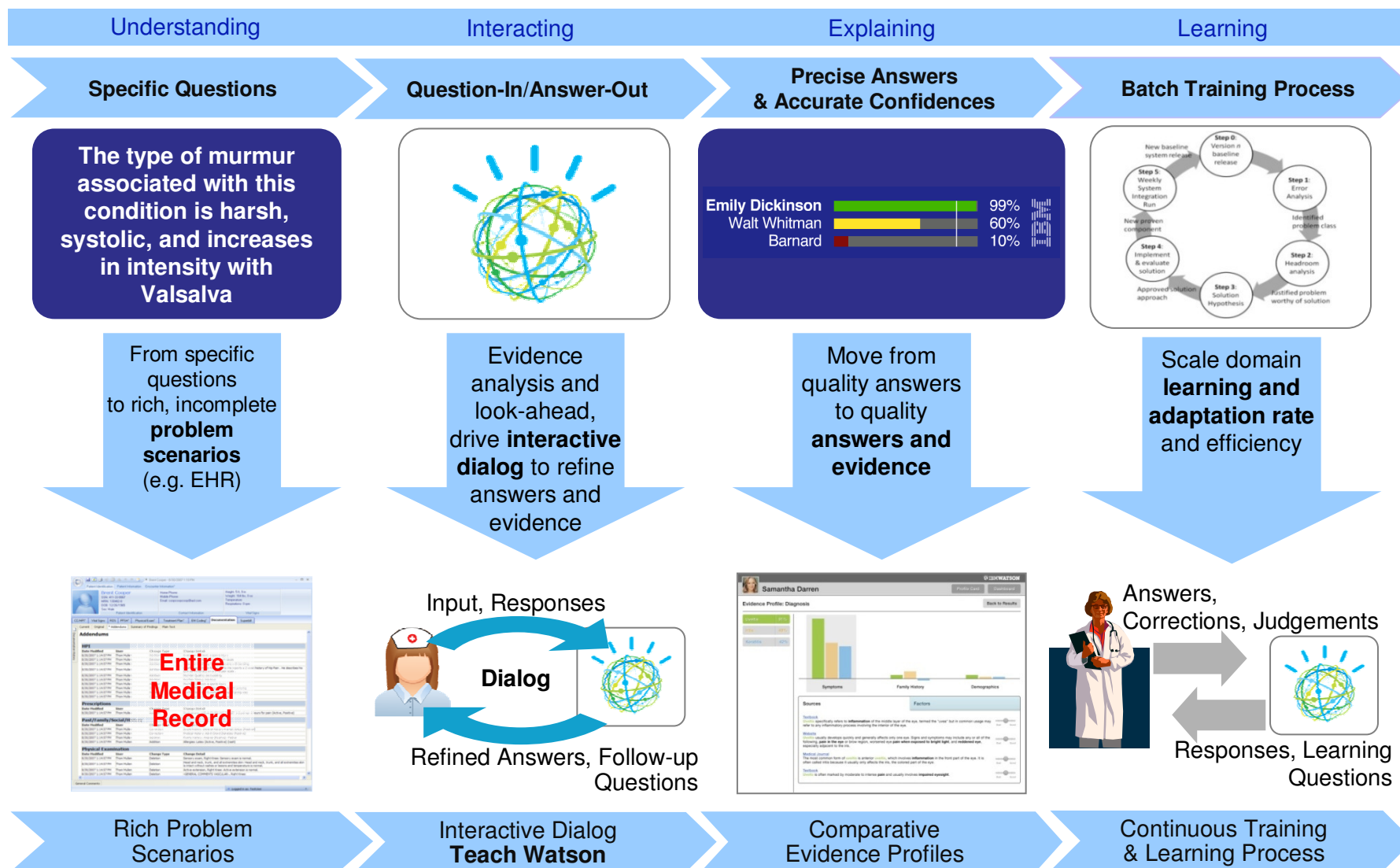
Enable efficient adaptation

- Efficiently adapting and scaling Watson to new domains requires a novel blend of engineering and research

Watson's real value proposition: Efficient decision support over unstructured (and structured) content



Taking Watson beyond Jeopardy!

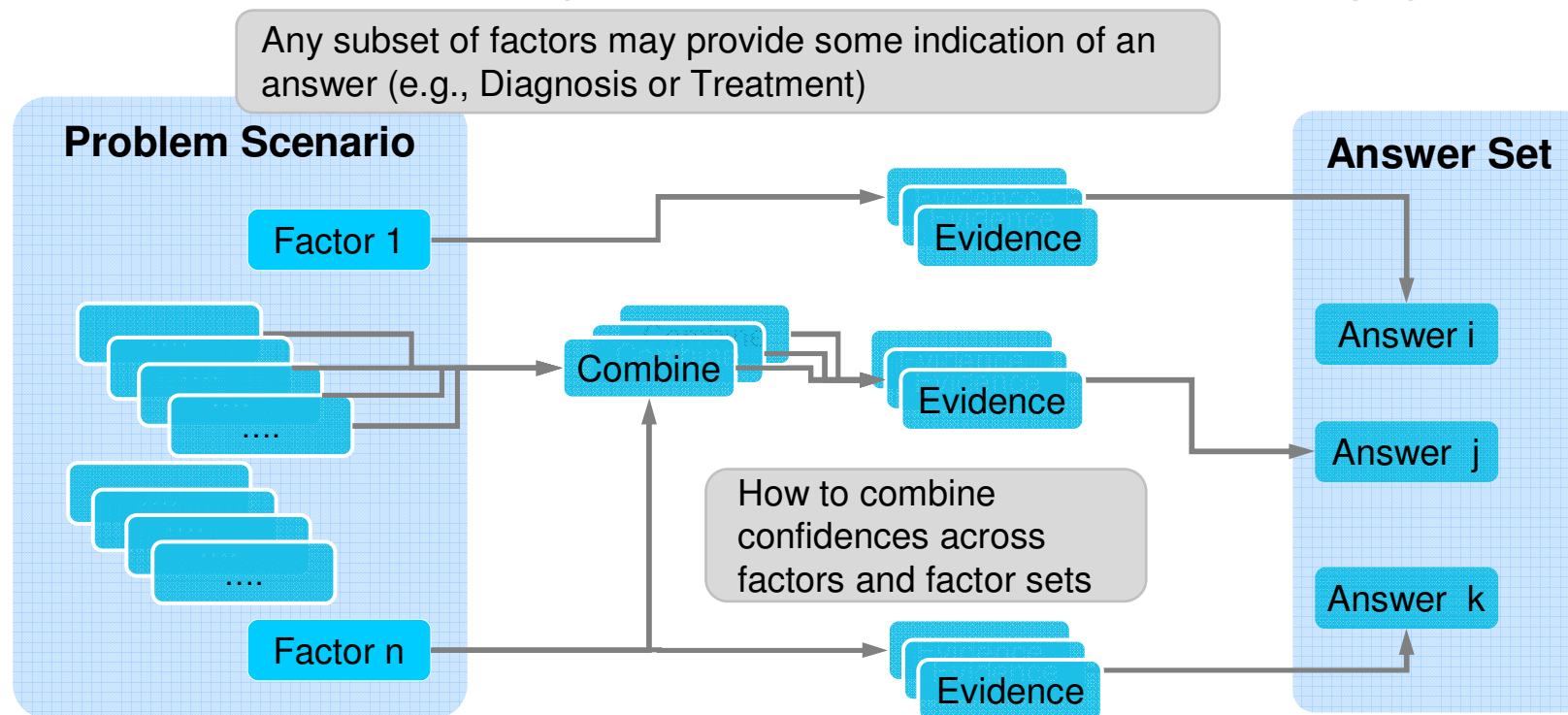


Moving from specific questions to high-value problem scenarios



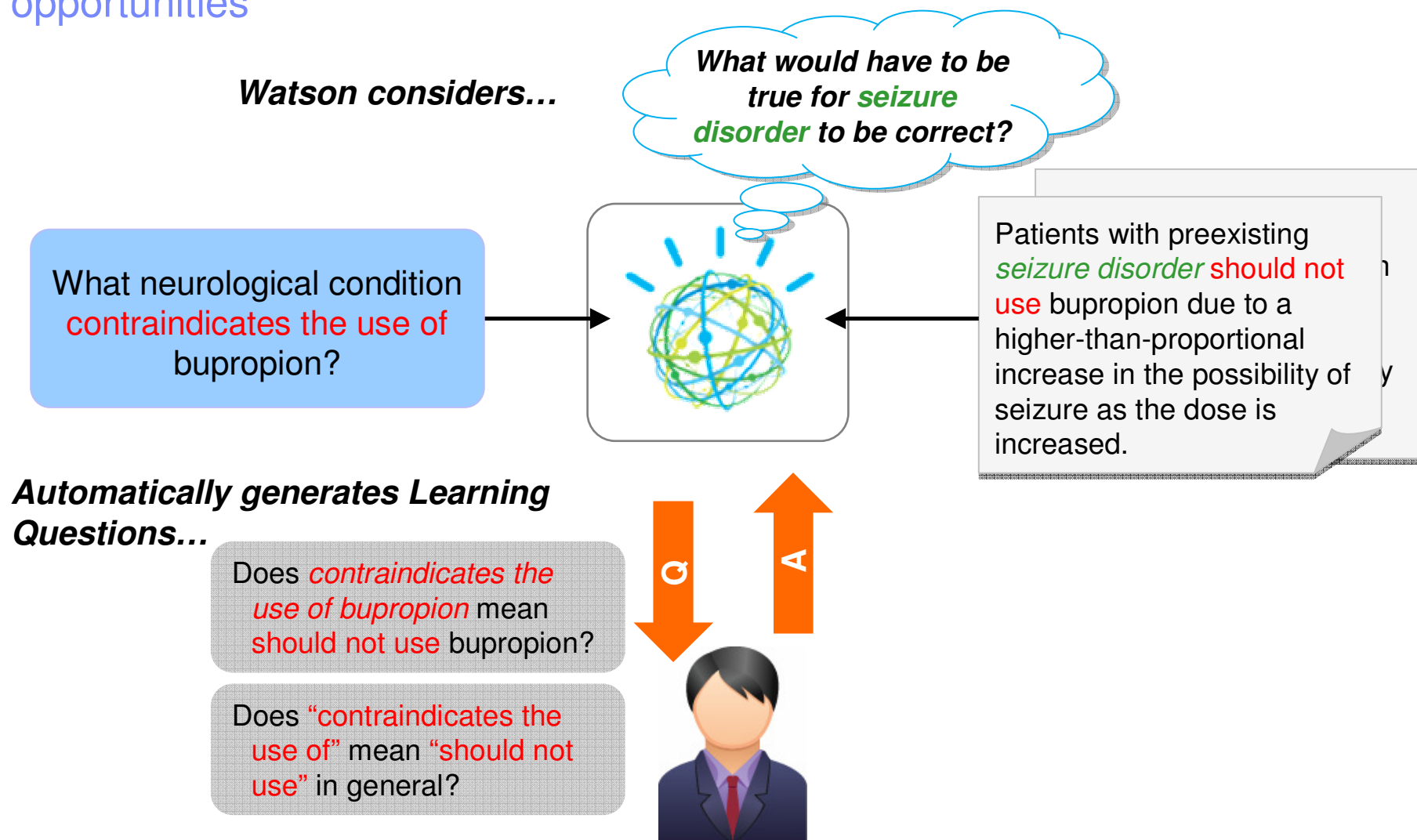
Specific, short questions produce a narrow, targeted range of hypotheses.

Much Harder – Multi-Dimensional Input and Multi-Dimensional Confidence Merging

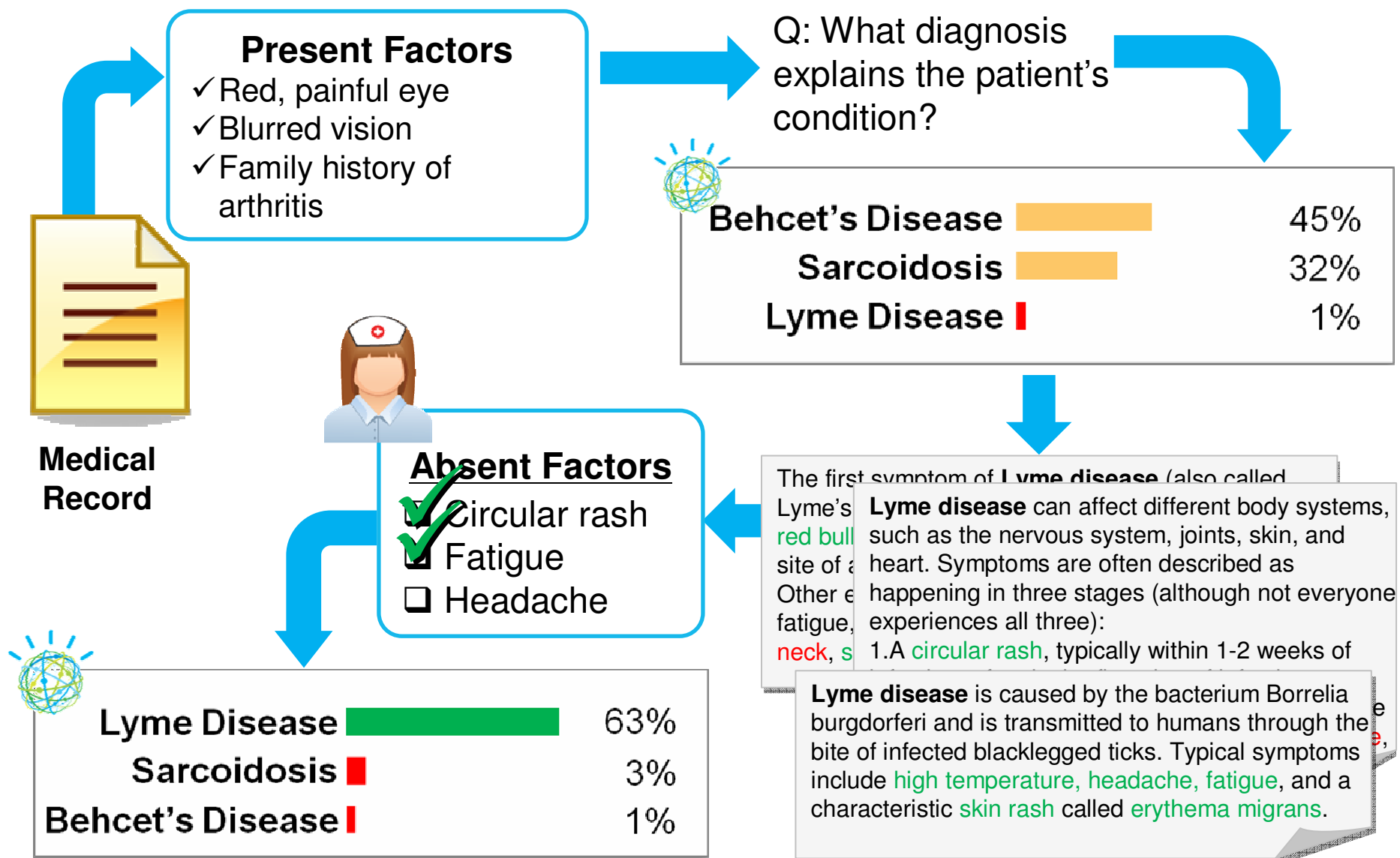


Which subsets of factors represent fruitful hypotheses and which may be sufficiently evidenced by the content? There are ~55K fields in an EMR – any subset may predict one or more of some several 100K diseases or conditions. And the clinicians will want to know WHY.

Teach Watson technology generates questions to enhance understanding and acquire new knowledge – used in dialog or crowd-sourcing opportunities



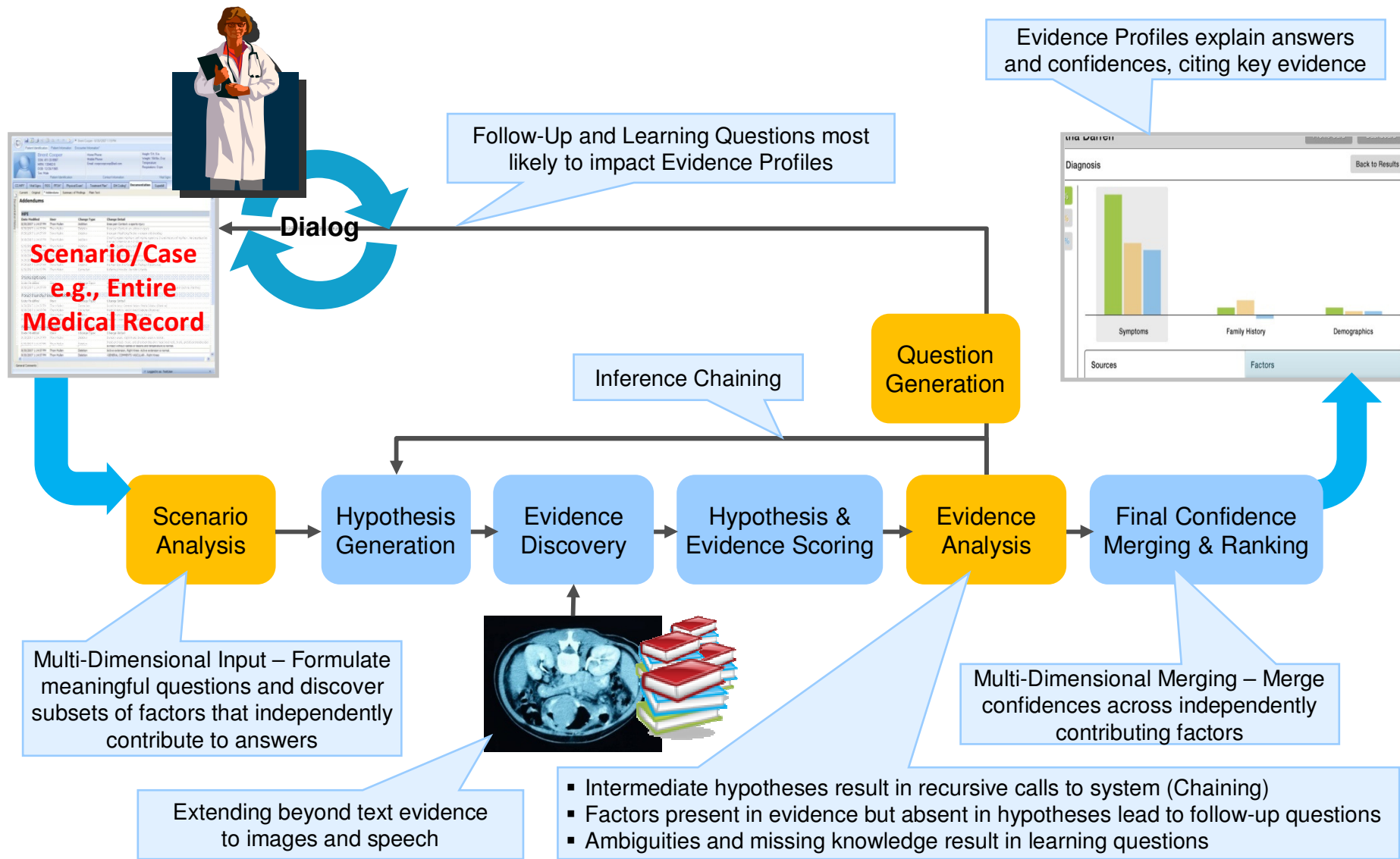
Dialoguing to an answer



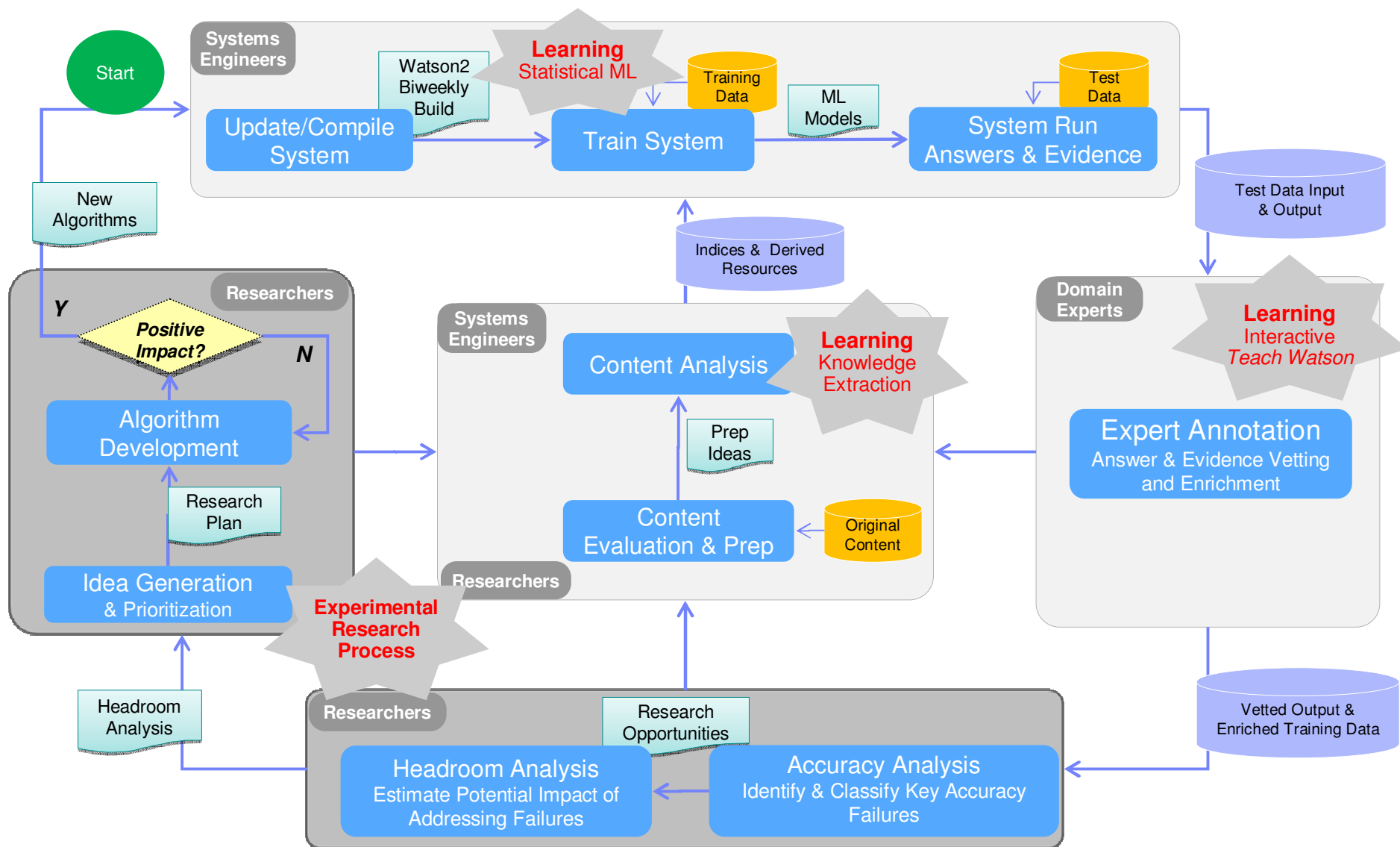
It's all about the evidence



Watson 2.0: From Jeopardy! to Clinical Decision Support



Domain learning: Training and adapting Watson to new domains



The Future Watson

Extend Watson technology

- Moves beyond “question-in & answer-out” to always “learning” evidence-based decision support

Lead in new domains

- Addresses the enterprise need to convert growing volumes of information into actionable knowledge
- Demonstrates business value in critical problem spaces, starting with Healthcare

Enable efficient adaptation

- Efficiently adapting and scaling Watson to new domains requires a novel blend of engineering and research

