

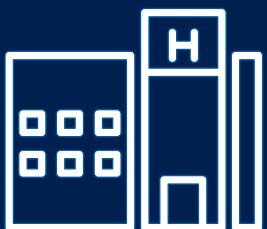


# Microsoft for Healthcare. Better Experiences. Better Insights. Better Care.

Veronica Jagher  
Director Industry Solutions, Health, Western Europe  
[vejagher@microsoft.com](mailto:vejagher@microsoft.com)

# 5 Trends

DRIVING  
INTELLIGENT  
HEALTH



Rapidly emerging  
technologies



1 GB

Aging  
populations



2 billion

Shortage of  
healthcare workers



14 million

0110101101010101010010101010100110101001010110101010010110100010111010101010101001010101101011001001



\$6.2 billion

Growing cybersecurity  
threats



97%

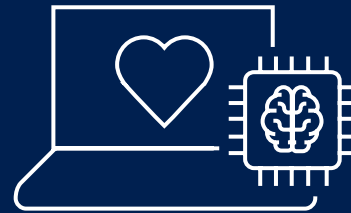
Increasing patient  
expectations

# Tech trends that shape the future of medicine



## Built-in healthcare intelligence

Power a new gen of Apps, digital therapeutics, sensors, smart agents and workflows...



## Data liquidity and system interoperability

Determine the success of precision medicine and population health



## Privacy, Security, Compliance for the Intelligent Cloud

Become proxis for patient safety and drive adoption of health innovation

*"Artificial intelligence represents one of technology's most important priorities, and healthcare is perhaps AI's most urgent application"*

Satya Nadella  
CEO, Microsoft

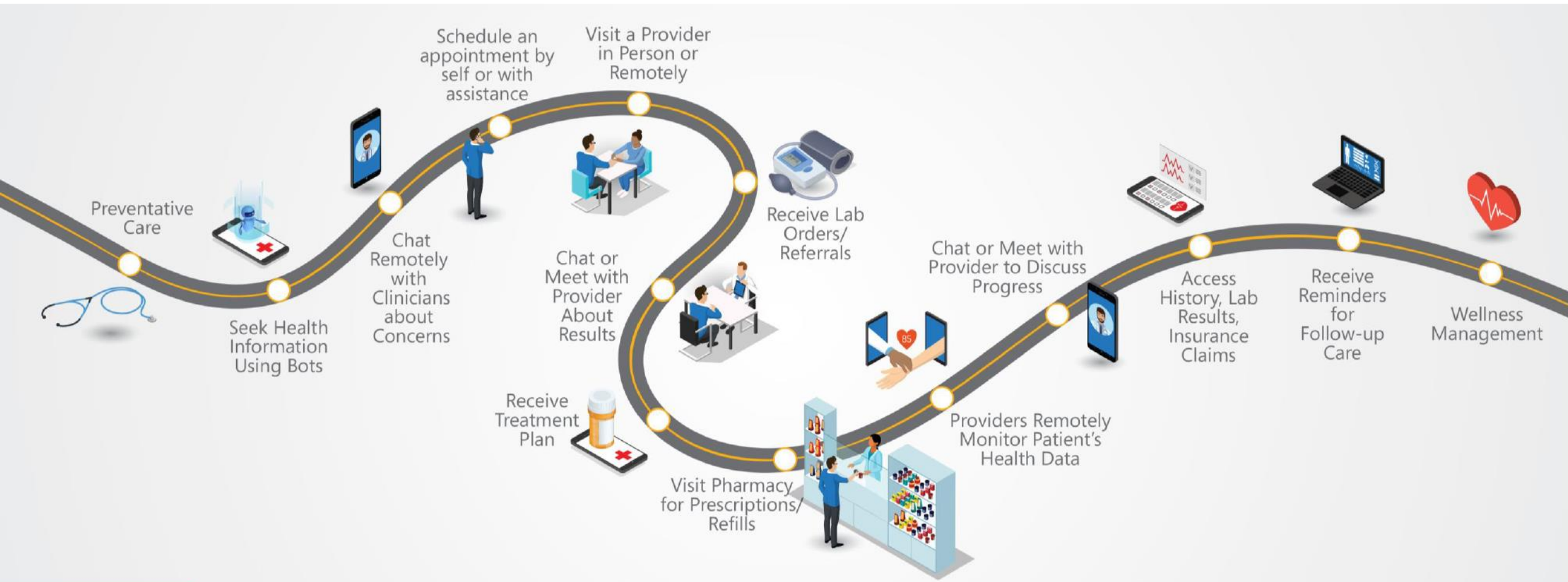




# 2030: Connected and disrupted health systems



# Reimagining the patient and clinician experience journey



## DIGITAL HOT SPOTS

### Prior to Visit

Seeking healthcare information, remote triage  
Choosing a physician or caregiving facility for treatment  
Appointment scheduling and reminders

### Diagnosis and Treatment

Remote interactions with providers  
Accessing and sharing electronic health records (EHR)  
AI-based provider support  
Care team collaboration

### Follow-up Care

Filling, refilling, and approving prescriptions  
Remote health monitoring  
Ongoing patient care and plan reminders

# Microsoft value proposition for healthcare is built around three pillars ...

## Reimagining Healthcare

*Better experiences. Better insights. Better care.*



### ENABLE PERSONALIZED CARE



### EMPOWER CARE TEAMS



### IMPROVE OPERATIONAL OUTCOMES



Empower every citizen and health organization on the planet to achieve more



Offering a flexible, scalable and compliant health cloud



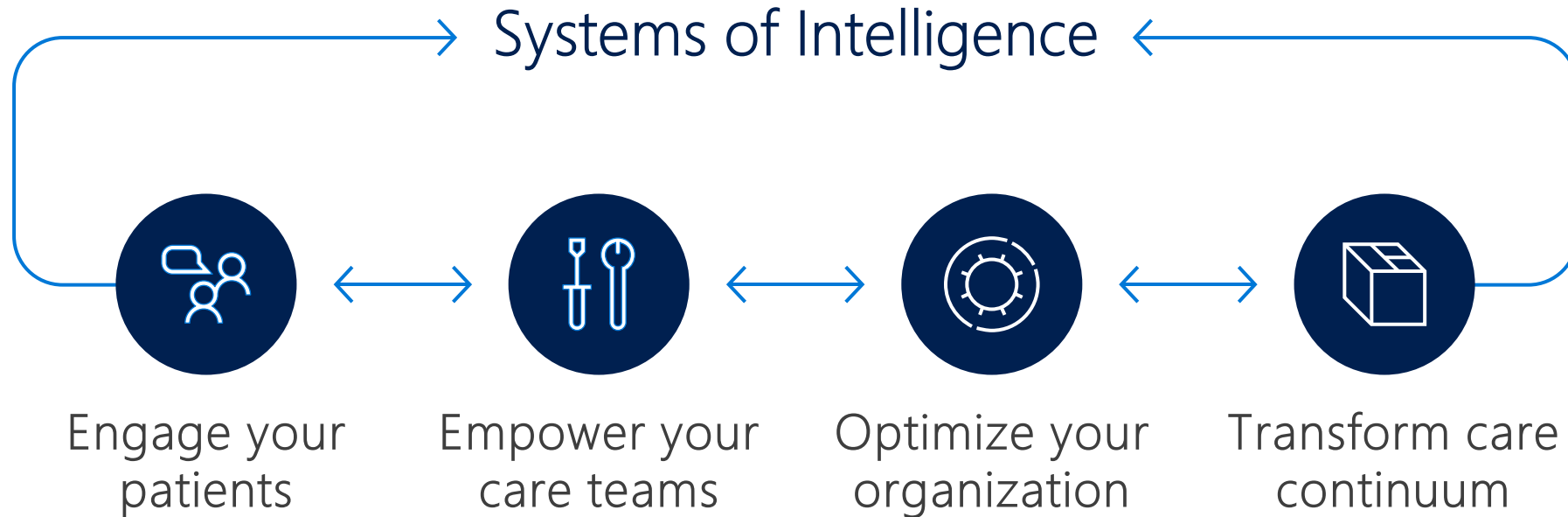
Cultivating health innovation with expert partners



Uniting disparate systems across a common platform



# ... which support organizations developing digital capabilities and feedback loops





# Ethics as core foundation

## Ethics and AI - Design Principles: it's all bout Integrity & Trust



Fairness



Reliability  
& Safety



Privacy &  
Security



Inclusiveness



Transparency



Accountability



*"Artificial intelligence represents one of technology's most important priorities, and healthcare is perhaps AI's most urgent application"*

Satya Nadella

CEO, Microsoft

# Thank you

[vejagher@microsoft.com](mailto:vejagher@microsoft.com)

